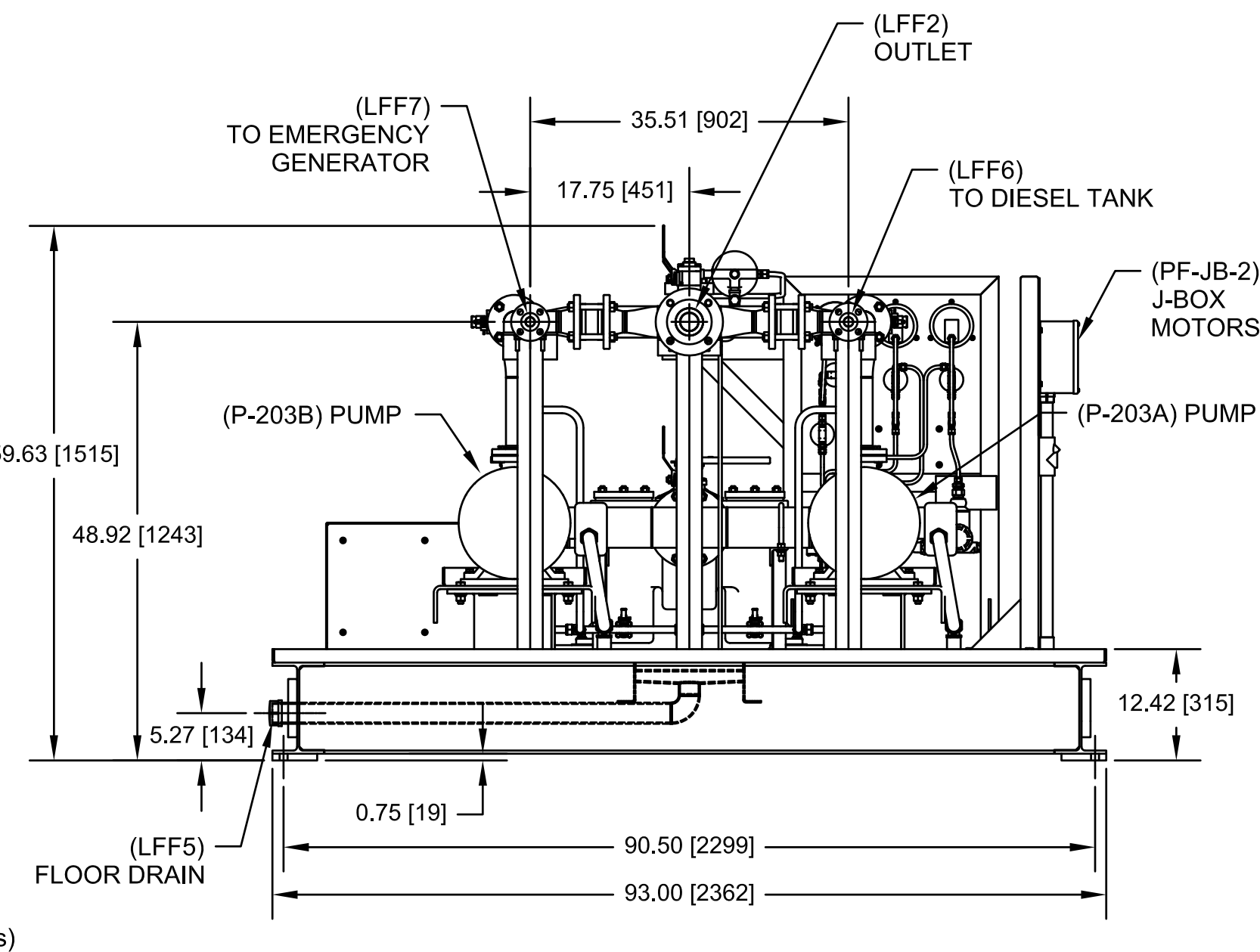
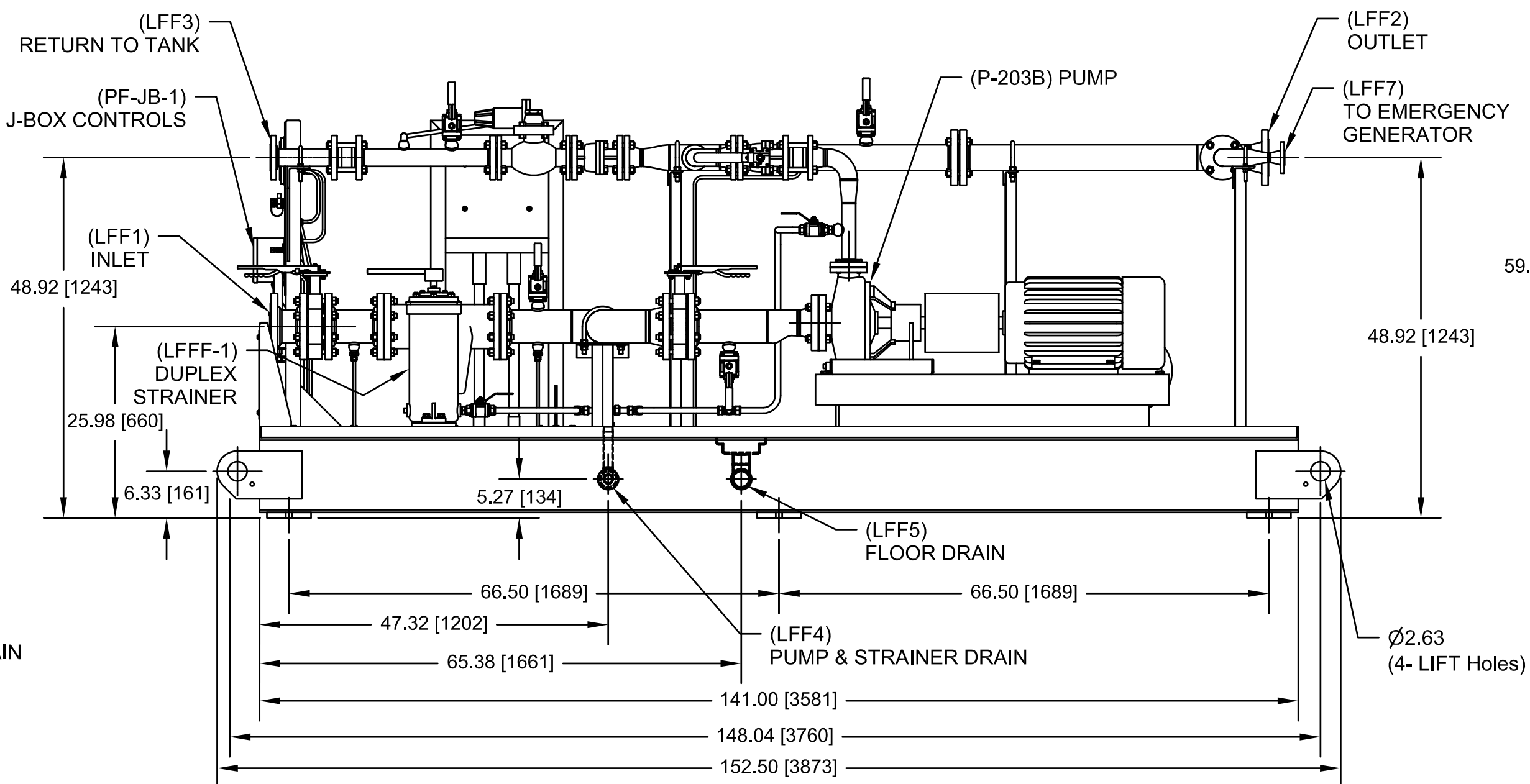
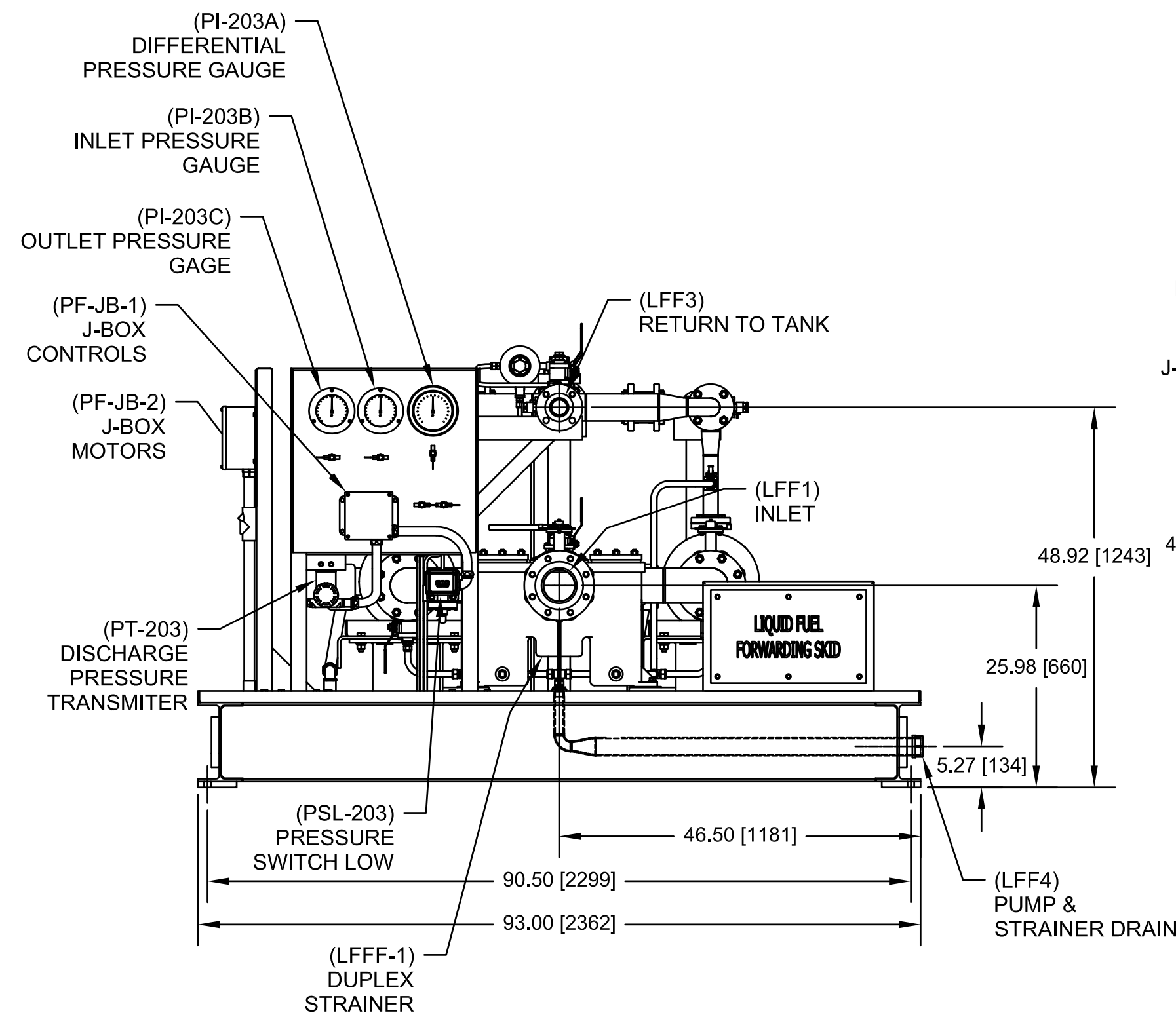
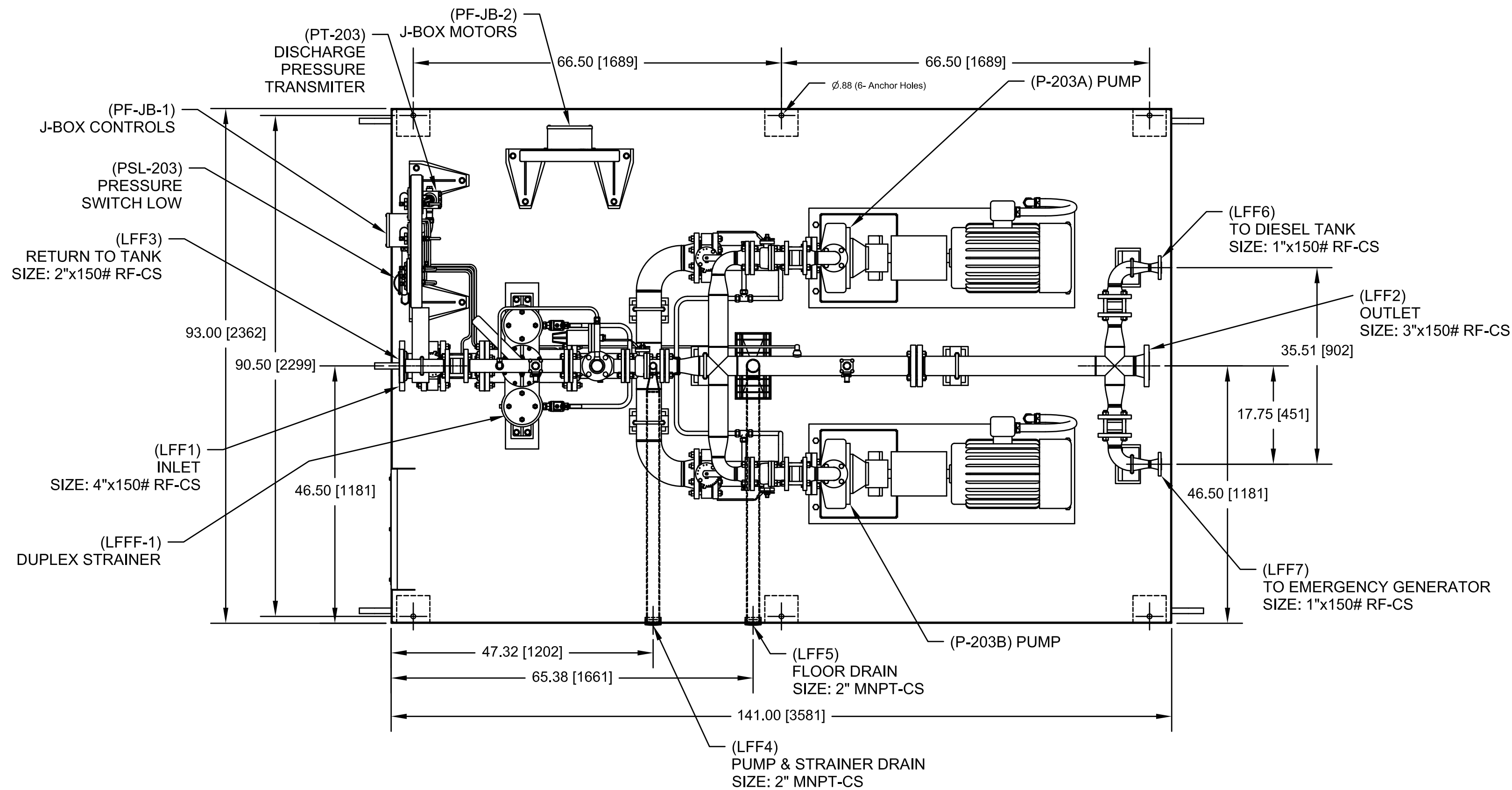


**IMPORTANTE**






ESTE PLANO FUE ELABORADO EN AUTOCAD V.2008  
CUALQUIER MODIFICACION REALIZADA EN CAMPO  
DEBERA SER NOTIFICADO A LA UNIDAD  
RESPONSABLE.  
QUEDA PROHIBIDO CORREGIR ESTE PLANO SIN  
AUTORIZACION DE ESTA UNIDAD.

ALL DIMENSIONS IN BRACKETS [   ] ARE MILLIMETER ALL OTHER ARE INCHES
---



- NOTES:
1. DO NOT PAINT INTERNALLY OR EXTERNALLY THREADED PARTS OR PARTS WITH FINISHED SURFACES THAT HAVE BEEN MACHINED FOR TIGHT TOLERANCE FITUP.
  2. PAINT FINISH:  
BLAST SSPC-SP10.NACE 2,2 mil  
2-COATS PHENICON HS (LIGHT GRAY)  
PART-A (920A175)  
PART-B (700-C-685)  
H&C SHARK GRIP ADDITIVE (SLIP RESISTANT ADDITIVE) ON WALKING SURFACES.
  3. CHECK FOR RESIDUAL STRESS AT THE PUMP PRIOR TO RELEASE AND OPERATION.

[illegible]

				
<p align="center">CAPACITY EXPANSION OF ELECTRICITY GENERATION AND TRANSPORT IN THE ISLAND OF MARGARITA LIQUID FUEL FORWARDING SKID DUAL FUEL MOD. UNITS 298034 &amp; 298035 (GENERAL ARRANGEMENT)</p>				